

Doosan G20G

BS-Nr. HC37

LPG Forklifts



View datasheet

Brands:	Doosan
Model:	G20G
Capacity:	2000 kg
YOM:	2015
Running hours:	1176
Price:	on request

View datasheet

Brands:	Doosan
Model:	G20G
Type:	LPG Forklifts
Engine type:	LPG
Capacity:	2000 kg
YOM:	2015
Hours:	1176

Mast data & Tyres

Mast type:	Triplex
Lift height:	4710 mm
Closed height:	2150 mm
Fork length:	1150 mm
Front tyres:	Superelastik
Rear tyres:	Superelastik

Dimensions

Closed height:	2150 mm
-----------------------	---------

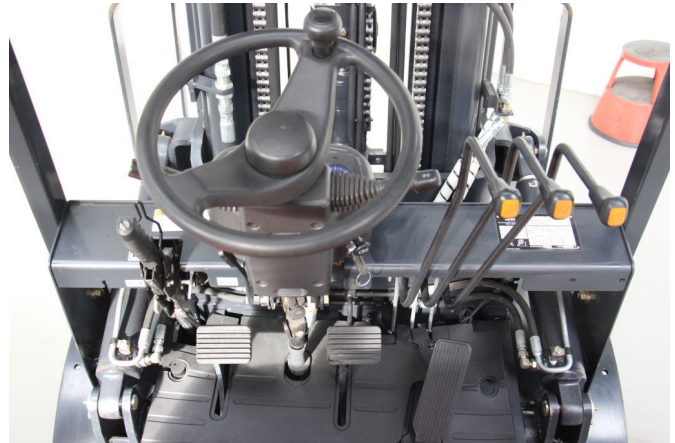
Motor, battery and charger

Description & Add. equipment

Attachments:	Side Shift
Add. equipment:	Full free lift

Subject to prior sale

Gallery



		MODEL	SERIAL NO.		TYPE
		G20G	FGA0W-2330-0589		LP
Doosan Corporation Industrial Vehicle B.G. MADE IN KOREA		TRUCK WEIGHT		RATED CAP.	2000 KG
		W/O ATT	WITH ATT	"D"	500 MM
ELECTRIC TRUCK ONLY		3765 KG		3715 KG	3000 MM
		ALLOWABLE WORKING CAPACITY WITH MAST VERTICAL			
VOLT	BAT TYPE	6	BACK TILT	MAST TYPE	FFT
MAX. AH CAP.		AT	HR RATE	TIRE TREAD	970 MM
BAT SIZE		ATTACH		HSS	TIRE PRESS
BAT WT. MIN		/MAX		KG	ID
TRUCK WT. W/O BAT		CAPACITY		D	H
		WITHOUT ATTACH	1925 KG	500 MM	4710 MM
		WITH ATTACH	1770 KG	500 MM	4710 MM
Manufactured (year)		2015		POWER	48.9 KW
950209-04906 ENGLISH		466, Injung-ro, Dong-gu, Incheon, Korea 401-010			

